

APBackup User's Manual

Table of Contents

Introduction

Introduction	2
FAQ	4

Working with tasks

Working with tasks.....	6
Task configuration	8
Task source	11
Backup shedule	13
Advanced backup options.....	15
Advanced Schedule Options.....	17
Conditional execution	18
Upload archive to FTP.....	19
Archive saving.....	20
Executing external applications	22
Statistics.....	24
External archivers	25
Notification before the tasks execution	26
Notifications.....	27
Performance	28

Program options

Program options.....	29
----------------------	----

External archiver using

Using external archivers.....	34
External archivers configuration.	37

Registration, support and licensing

How to register.....	38
Contact Us.....	39
License.....	40

Introduction

What is APBackup?

APBackup makes it easy to back up your data virtually to any type of storage media: hard or network drive, DVD, CD-R/W, FTP or LAN. It will help you organize your backups and schedule automatic backups. Backup files can be stored in standard Zip format, so they can be viewed and restored with most ZIP file utilities. APBackup can use special plug-ins to backup data with ANY other compression tools (WinRar, ARJ, JAR,...). Also it allows to copy your data without compression. APBackup also features intuitive user interface making even the most advanced features easily accessible to beginners and professionals. It is designed to fit all your needs completely.

Key features:

- Backup files can be stored in standard Zip (Zip64 compatible) format
- Supports AES 256 encryption
- Plug-ins allows to create archive in ANY other format (WinRar, ARJ, JAR,...)
- Supports inclusion and exclusion of files by wildcard mask as well as by exact file name.
- Supports backup of in-use and open files
- Detailed logs of all backup operations.
- Intuitive user interface for beginners and advanced options for experts.
- Has its own scheduler supporting unattended auto-backup and scheduling of any specific time or date, day of the week or month.
- Allows you to create incremental backups so you only need to backup files that have changed.
- Supports FTP, FTPS (FTP over SSL/TSL), all types of LAN and UNC file path names (Network folders).
- Filename can be auto created for every backup. A maximum backup versions number can be set, the oldest backup versions will be auto deleted.
- Backup files can be protected with a password.
- Can notify user through email when backup operation have finished.
- Can store multiple folders (even from different computers) in one archive.
- Prepared archive can be stored in 3 additional folders.
- External applications can be started before or after task execution.
- Flexible performance tuning
- Can be used as Windows NT/2000/XP service
- Source folders can be monitored, so tasks can be automatically started after source folders was changed.

Utility works under W98, Me, W2000, NT, XP, W2000, W2003, Vista

Visit our site for latest news, new versions and updates: <http://avpsoft.com>

Visit our forum to submit your questions: <http://avpsoft.com/forum>

Technical support: support@avpsoft.com

Go to our registration page <http://avpsoft.com/purchase> to register.

(c) AVPSoft, 2002-2008

FAQ

Q: Can APBackUp save my archive to remote computer or to CD-RW

A: APBackup can copy archive via LAN to Remote computer, to FTP server or through E-mail. So APBackup can copy archive to CD-RW via Packet Writing interface. In this case you need to install one of followings packets (for example): Roxio DirectCD, Ahead InCD, Software Architects Write CD-RW.

Q: When error was occurred in the task, it became inactive and stopped executing according to the schedule. How can I tune the task to postpone the task if error is occurred?

A: You can do it on the "Schedule" tab in the Task edit window. You should choice one of three variants of behavior in "If error is occurred during the archivation" panel. They are: Deactivate (by default), Postpone the task according to the schedule, Repeat in N minutes.

Q: How can I save all of my tasks and copy to other computer?

A: All tasks are saved in ArhTasks.bpd file.

Q: How can I tune tasks to executing one after one?

A: APBackup allows you to build chains of tasks. To do it you should choice "After executing the task X" kind of schedule.

Q: I have very big size of data to backup and APBackup displays error in log file. What should I do?

A: You should setup "Archiver temporary folder" in program options. One more, make sure that there is enough space on the destination drive.

Q. When I choosing source folders, I can't see hidden files and folders. What can I do?

A. APBackup uses standard Microsoft Windows dialog to choice folders, so you should setup viewing of hidden files in Windows "My computer".

Q: When I start APBackUp as normal windows application the task work via LAN without troubles. But if I star APBackup as service the task falls. Why?

A: That is from Microsoft Win32 SDK:

"The LocalSystem account is a predefined local account used by system processes. The name of the account is .\System. This account does not have a password. If you specify the LocalSystem account in a call to the CreateService function, any password information you supply is ignored.

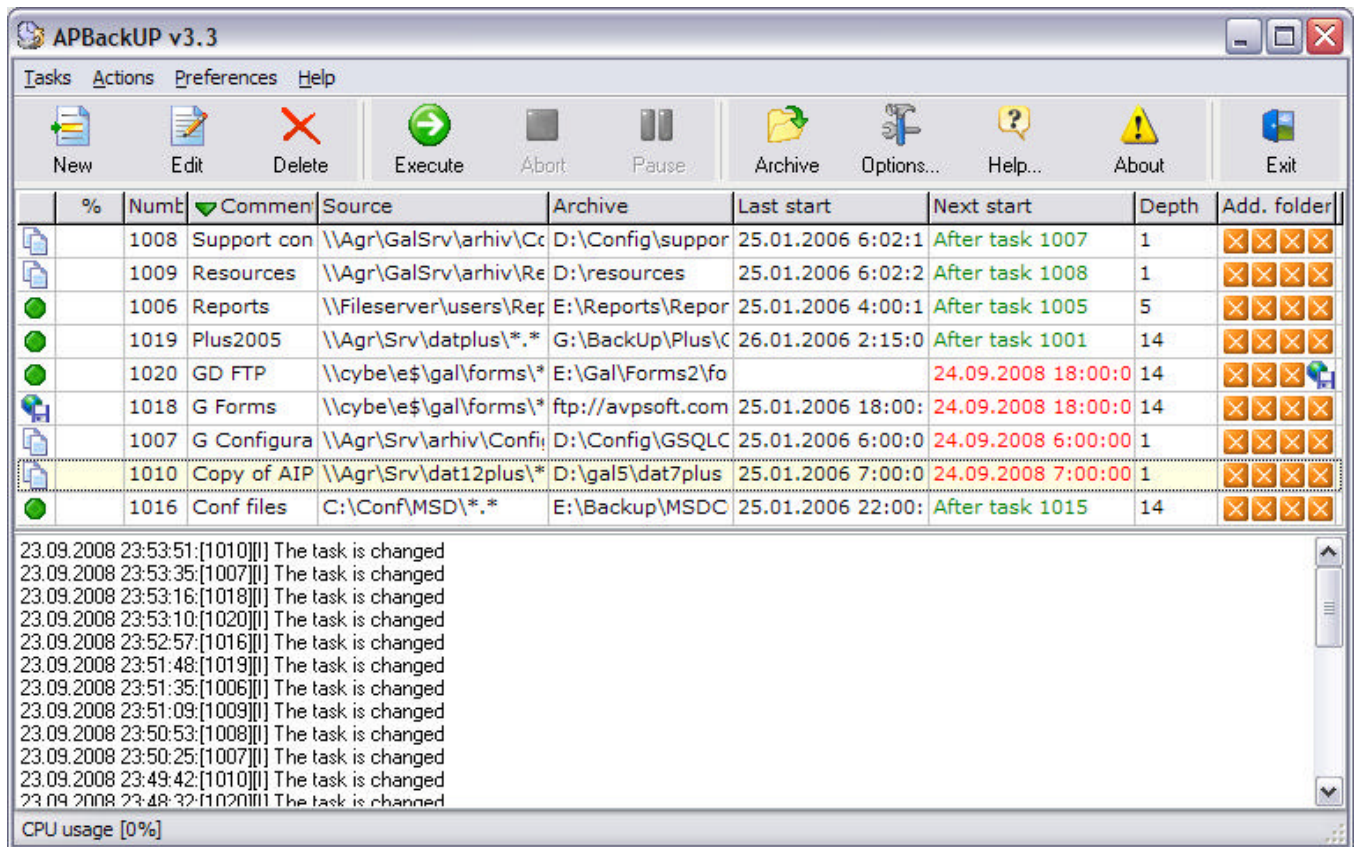
A service that runs in the context of the LocalSystem account inherits the security context of the SCM. It is not associated with any logged-on user account and does not have credentials (domain name, user name, and password) to be used for verification. This has several implications:

- The service cannot open the registry key HKEY_CURRENT_USER.
- The service can open the registry key HKEY_LOCAL_MACHINE\SECURITY.
- The service has limited access to network resources, such as shares and pipes, because it has no

credentials and must connect using a null session. The following registry key contains the NullSessionPipes and NullSessionShares values, which are used to specify the pipes and shares to which null sessions may connect:










- HKEY_LOCAL_MACHINE\SYSTEM\CurrentControlSet\Services\LanmanServer\Parameters
- Alternatively, you could add the REG_DWORD value RestrictNullSessAccess to the key and set it to 0 to allow all null sessions to access all pipes and shares created on that machine.
- · The service cannot share objects with other applications, unless they are opened using a DACL which allows a user or group of users access or NULL DACL, which allows everyone access. Specifying a NULL DACL is not the same as specifying NULL, which means that access is only granted to applications with the same security context. For more information, see Allowing Access. · If the service opens a command window and runs a batch file, the user could hit CTRL+C to terminate the batch file and gain access to a command window with LocalSystem permissions“

Working with tasks



All tasks are started automatically according to schedule or manually (by pressing "Run" button). You can pause the task already being executed by pressing "Pause" button, or abort it by pressing "Stop" button. In later case, the task will be stopped immediately.

The following icons can be seen in the task list:

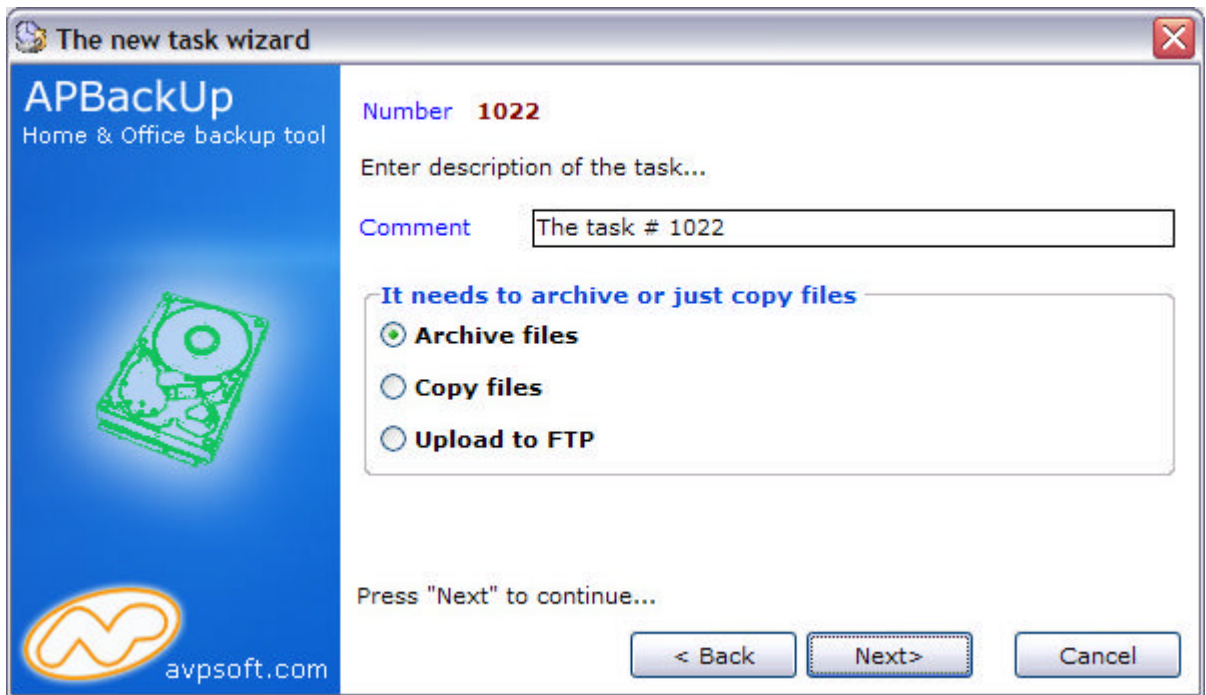
-  - the task is active and configured for execution without archiving or copying
-  - the task is being edited
-  - the task is being executed
-  - the task is being executed by an external archiver.
-  - the task is not active
-  - the task is paused
-  - the task is active and configured for execution with an external archiver
-  - the task is active and configured for execution with built-in ZIP archiver
-  - the task is active and configured for execution with copying (not compressing)



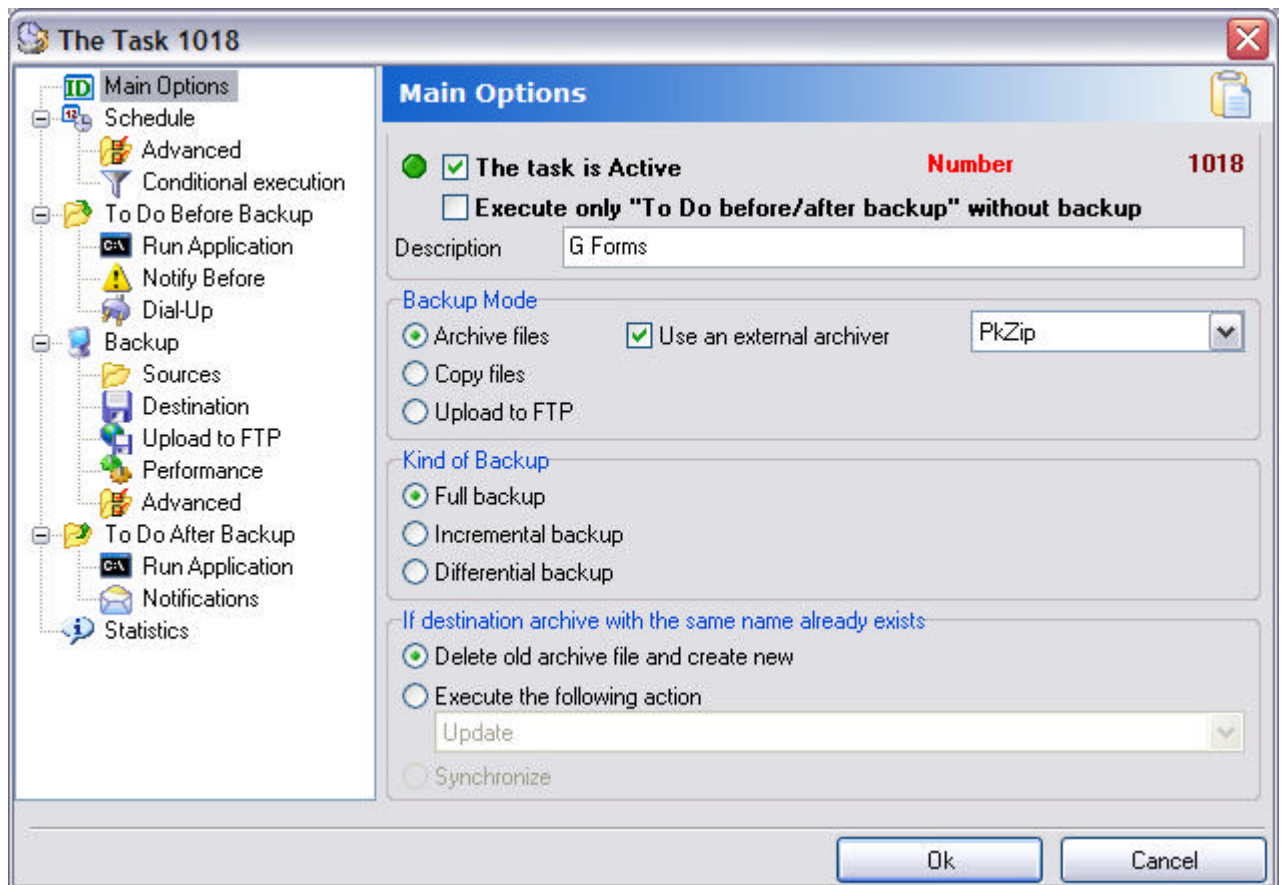
- the task is active and configured for execution with copying to FTP

Task configuration

To create new task you can use "New" button of main menu. Then New Task Wizard window will be displayed.



After you tune all main options of the new task "Edit task window" will be displayed



In this window you can tune all other options of the new task.

Here there are following panels:

- [Source files](#).
- [Schedule](#).
- [Saving](#).
- [Statistics](#).
- [Performance](#).
- [Run After/Run before](#).
- [Conditional execution](#).
- [External archivers](#).
- [Upload to FTP](#).
- [Notifications](#).
- [Notify before](#).

For the task you can setup following options:

Number

APBackup assigns Number of the task automatic. This number is used to identification task in log file.

Description

You can write here your comments.

"The task is active" check box

If you clear this check box current task won't be executed automatically according to the schedule. You can run it only manually. To make it executable automatically you should check this box.

"Execute only "To do before / before backup" without backup" check box

Check this box if you want to execute only external applications without archiving. In this case APBackup likes others ordinary schedulers.

"Backup mode" panel

This panel allows you to setup backup modes:

- **"Archive files"** - APBackup will archive all source files into one archive. By default it is built-in ZIP archiver (Zip64 compatible). You can choice ANY other external archive if you wish.
- **"Copy files"** - APBackup will just copy source files in to destination folder, without archiving them.
- **"Upload to FTP"** - APBackup will copy source files to defined FTP Server.

"Kind of backup" panel

This panel allows you to setup following types:

- Full backup
- Incremental backup (only new or modified files will be archived).
- Differential backup

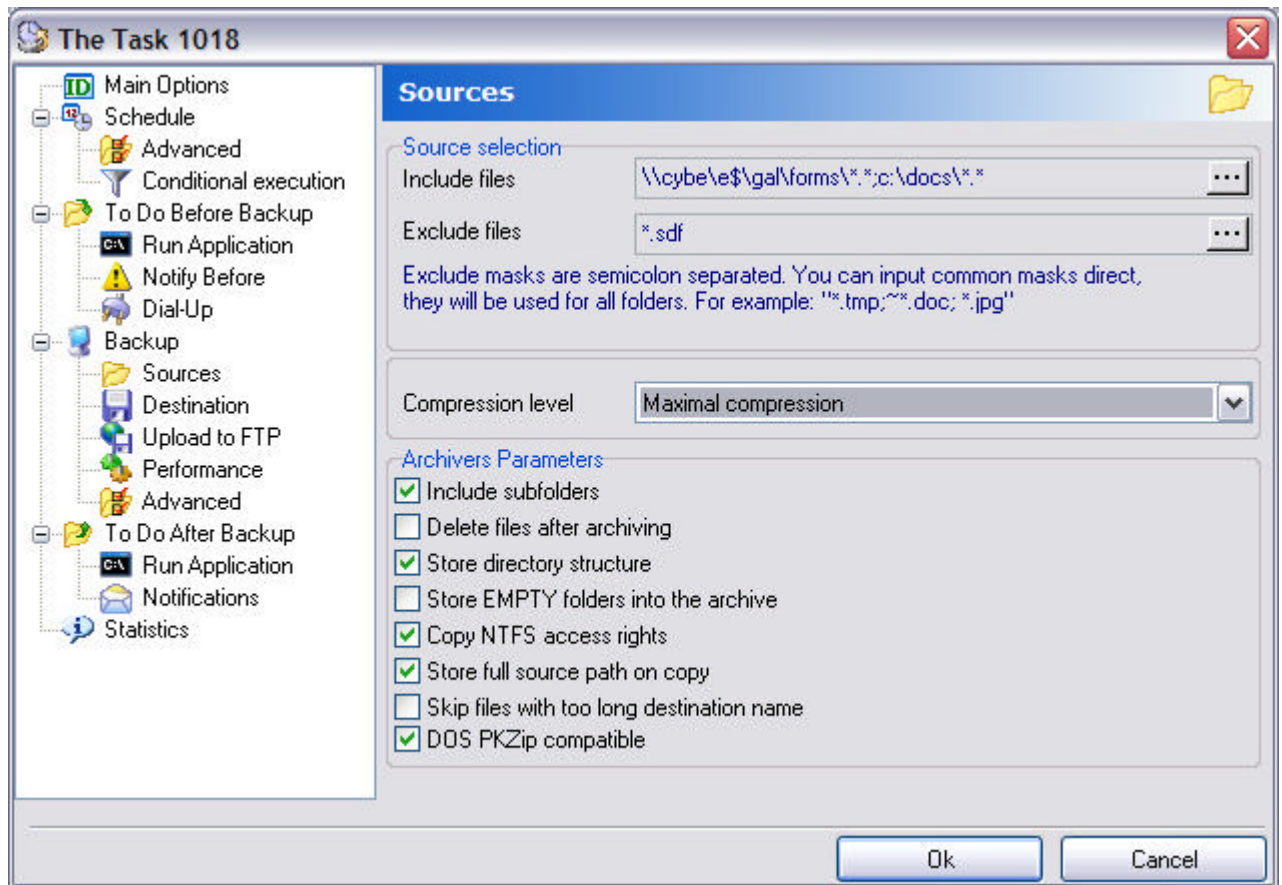
If archive with the same name already exists

This tab tells the application what to do if an archive with the same name already exists. This can happen, for example, if Date format is set up with no days or hours.

The following options are available

- Delete old archive file and create new (default) - old file in Archive folder with the same name will be deleted, and new archive will be created
- Synchronize
- Execute the following actions:
 - Update old archive file
 - Add new files to the archive
 - Refresh files in the archive

Task source



On this page you can define which files and folders you want to backup. Following options are available:

Include files

Choose files and folders to include into archive. You can use the list editor to choose files or enter them manually.

For example: "c:*.doc;E:\Work*.xls"

Exclude files

Choose files and folders which you want exclude from archiving. You can use the list editor to choose files or enter them manually.

For example: "*.doc;*.xls"

Compression level

For each task you can choose archive compression level. Following items are available: Do not archive (archive will create without compression), fastest, faster, fast, normal, slow, slower, maximal compression.

Archiver parameters:

Include subfolders

If this flag is set then all subfolders of source folders will be included in archive

Delete source files after archiving

WARNING!!! If this flag is set then all source files and folders will be DELETED after archiving

Store directory structure

If this flag is on then directory structure of the source folders will be saved in archive. If this flag is off, all files will be saved without paths in one directory.

Store empty folders

If this flag is on then empty source folders will be created in archive.

Copy NTFS rights

If this flag is on then NTFS rights of source files and folders will be copied. Built-in Zip archiver doesn't support this option. If you want to copy NTFS rights use COPY MODE or external archiver like WinRar, which support this option.

Store full source path on copy

If this flag is on then all files will be stored in archive with full source path.

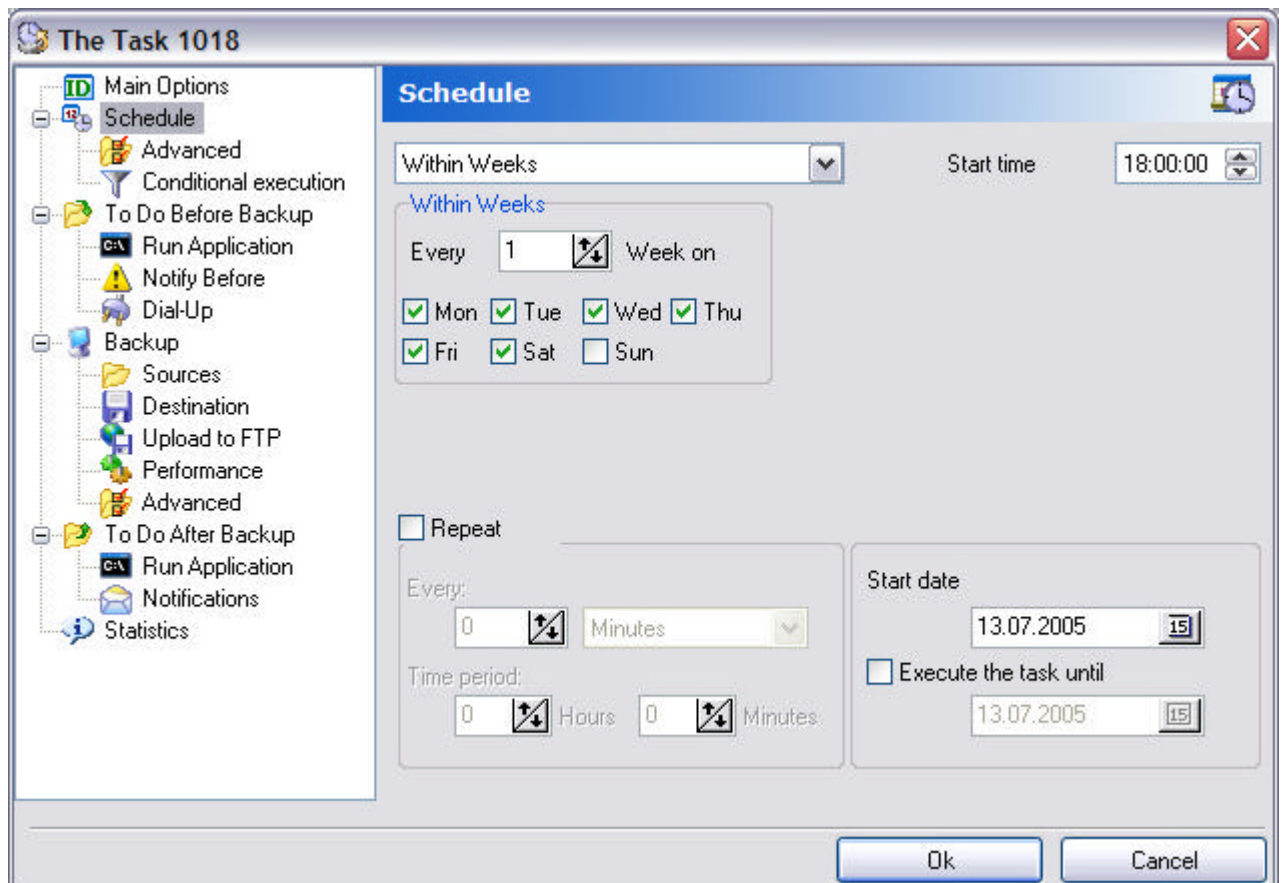
For example: There are following folders: C:\data\buh\x\bin , C:\data\buh\x\1Sdb.

You define following source path «C:\data\buh\Today*.»*» and set this flag on. So full paths \data\buh\x\bin and \data\buh\x\1Sdb will be stored in archive. If you set this flag off, then only following path information \bin and \1Sdb will be saved.

Backup schedule

On this page you can define backup schedule for the task.

The task will be executed according schedule only if it is ACTIVE. If it is not you can start the task manually only.



You can define **"Start time"** and time period. Following kinds of schedule are available:

Within days

For example: Every 3rd day from the start date

Within weeks

So you can select days of week to start the task.

Example: Every 3rd week at Monday and Friday.

Within months

So you can select months of year and day of month to start the task

Example: Every 2nd month. Archive at 3rd of January and 3rd of June.

Once

The task will be executed only once

On system startup

The task will be executed X seconds after APBackup starts

On system startup (once per X days)

The task will be executed when APBackup starts but only once per X days.

After executing the task X

The task will be executed after executing the task # X. You can define different final of the task X: "On execution (failed or successful)", "On successful execution", "On failed execution"

On folder content's change

ApBackUp will monitor the source folders and start the task when files or attributes are changed.

Additional options of schedule:**Start Date**

Date when the task is executed for the first time.

Execute the task until

Last date when the task is executed

Repeat

In addition to the main schedule, you can ask APBackUp to repeat task after scheduled execution, with specified time intervals ranging from 1 minute.

"Every" - repeat task every X minutes or hours.

"Time period" - the period during which the task is to be repeated.

Example: Within 1 day,

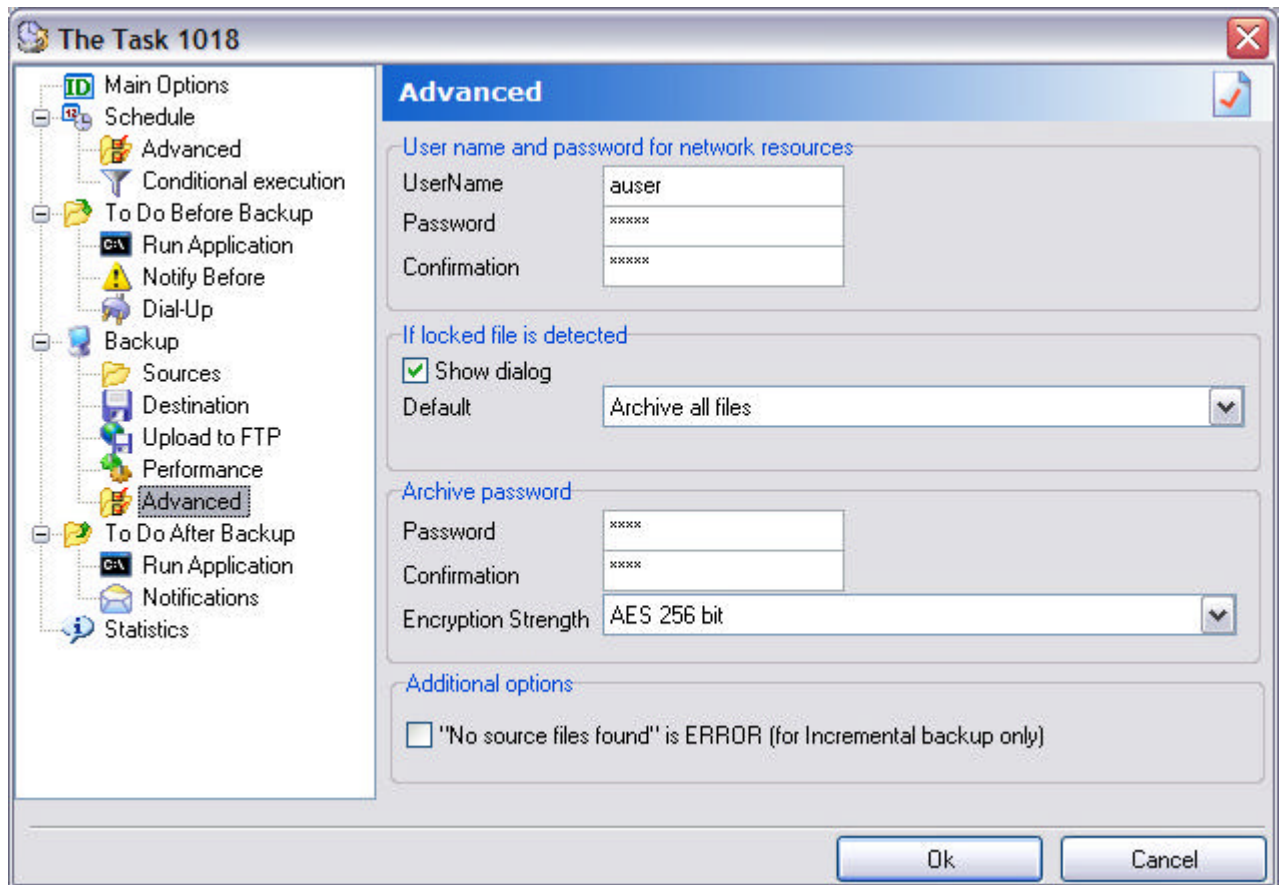
Start time 1:00,

Repeat Every 30 min,

Time period 2 hours

So the task will be executed at 1:00,1:30,2:00,2:30,3:00 every day.

Advanced backup options



On this page you can define advanced backup options:

Actions at detection of files locked by other application

APBackup allows working with locked files in source folders. So you can backup information when users work with documents or applications. For each task you can choose action at detection of file locked by other application. Following options are available:

- Archive all files. In this case file will be open for reading and copy to archive. If it is locked exclusive by other application it will be skipped.
- Skip locked files. In this case all locked files will be skipped.
- Abort task execution. In this case task will be aborted with error state when flocked file is detected.

In addition you can choose «Show the dialog if locked file is found». In this case when APBackup detects locked file, dialog window will be displayed. In this window you can choose one of three actions listed before. If user don't make a choice window will be closed in 30 seconds and default action will be chosen.

Archive password

You can set password for created archive file

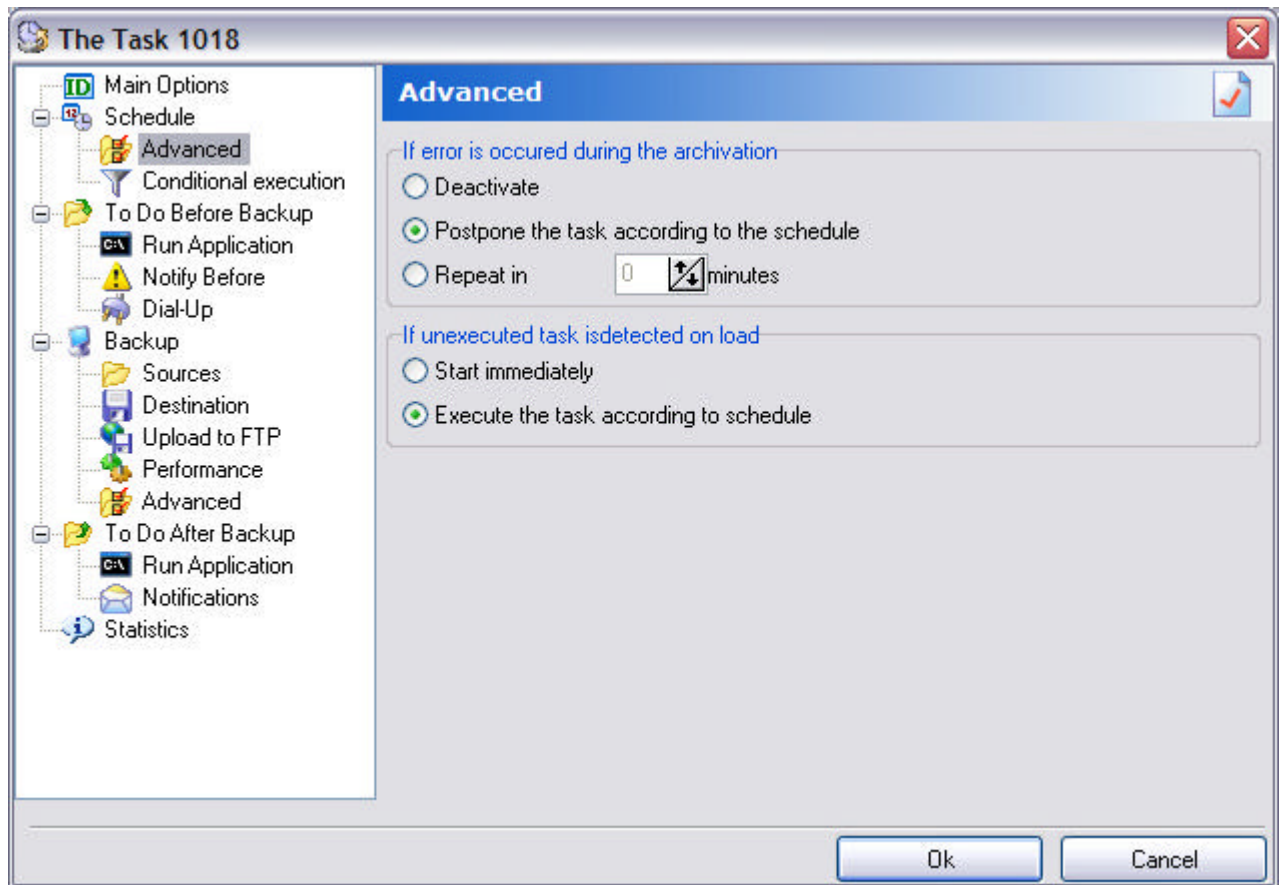
Encryption Strength

Here you can select a cryptographic method to protect ZIP archive.

Username and password for network resources

When source files or folders are on the network (example: "\\Computer1\\folder1"), you can specify a username and password for connecting to these resources, if these resources are not available for the currently logged user. If no username and password is specified, then APBackUp will try to connect to these resources using current user account information.

Advanced Schedule Options



If error is occurred during the archivation

In this tab you can define action to be performed if an error is detected during the archivation. The following options are available:

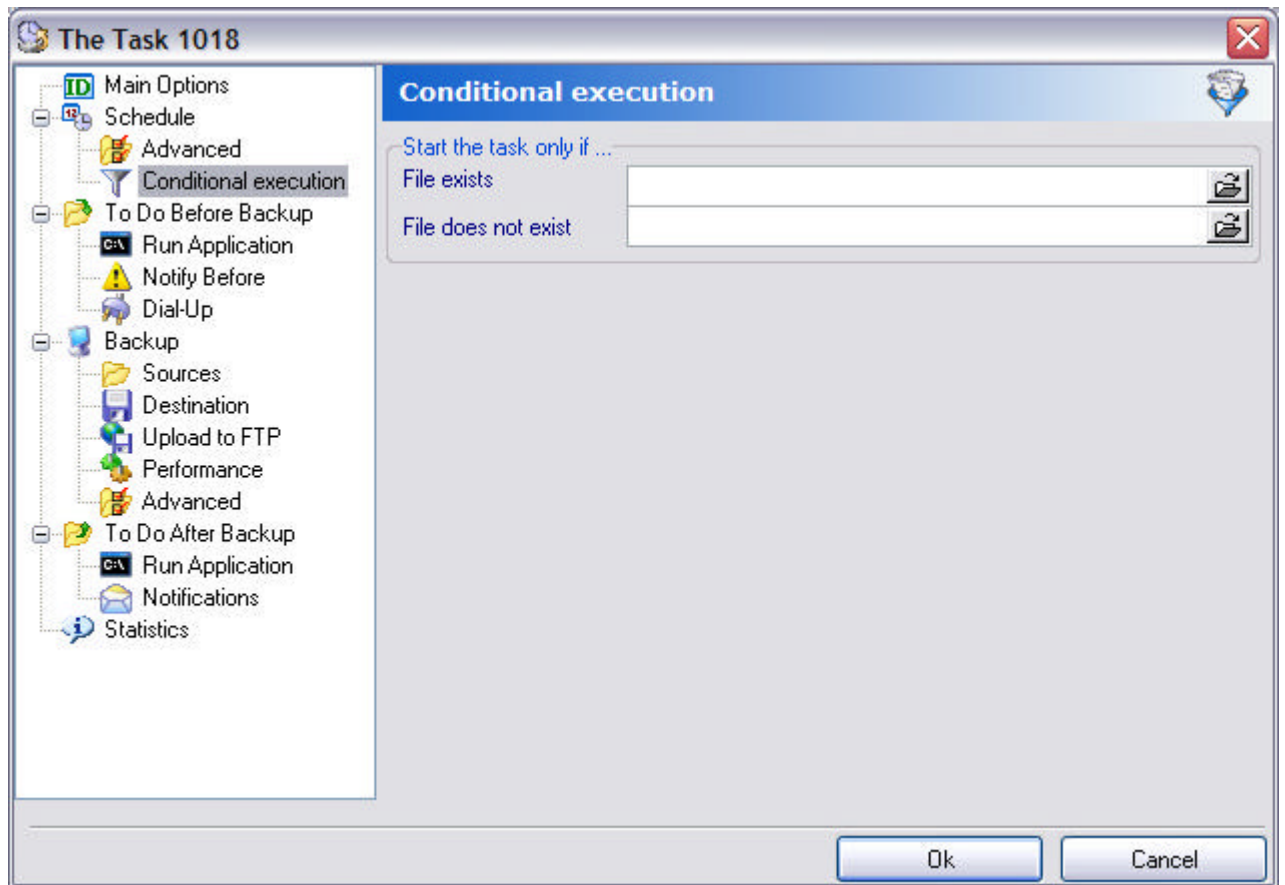
- Deactivate (default). The task will be deactivated and will not be executed again until you set flag "The task is active".
- Postpone the task according to the schedule. The task will be executed in the next time according to schedule.
- Repeat in N minutes. The task will be repeated every N minute until execution succeeds.

If unexecuted task is detected on load

In this tab you can define action to be performed after APBackUp detects unexecuted task when application is loading. Two options are available:

- Start immediately The task will be executed immediately.
- Execute the task according to schedule. The task will be executed according to schedule.

Conditional execution



You can define conditions to start the task. If these conditions are not met, the task will not be executed.

Following options are available:

- Start the task only if file exists
- Before start the task program check existing defined file and start the task only if file exists
- Start the task only if file doesn't exists
- Before start the task program check existing defined file and start the task only if file doesn't exists.

Upload archive to FTP

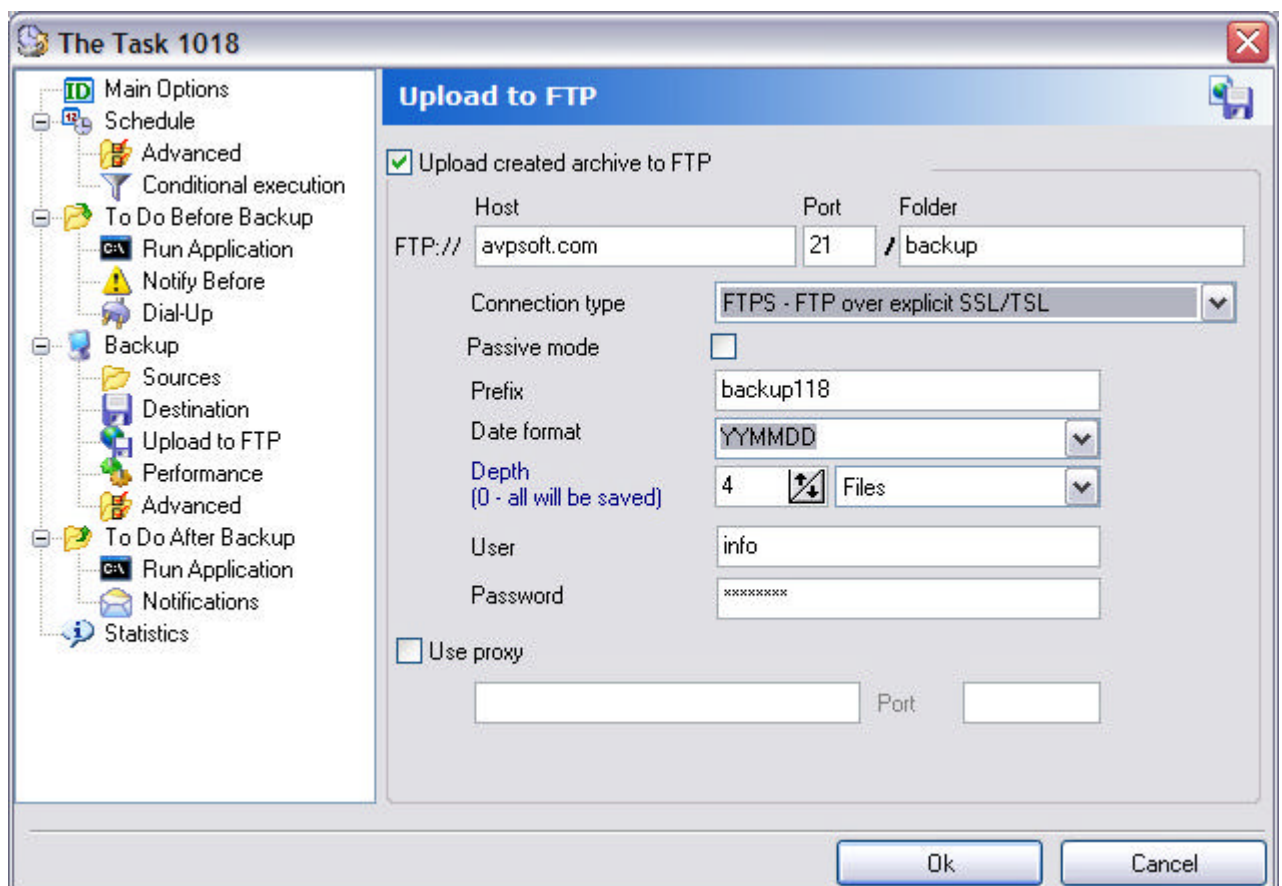
Your archives or files can also be uploaded to FTP server. To do this, you have to provide the host name, port, login, password and folder name for chosen FTP server along with archive prefix and date format. You can also use proxy server and use passive mode to upload archives to your FTP, if necessary.

Note: Only one type of firewall (FTP Proxy) is supported: remote_user@remote_host is sent to the firewall as user name when connecting to a remote_host.

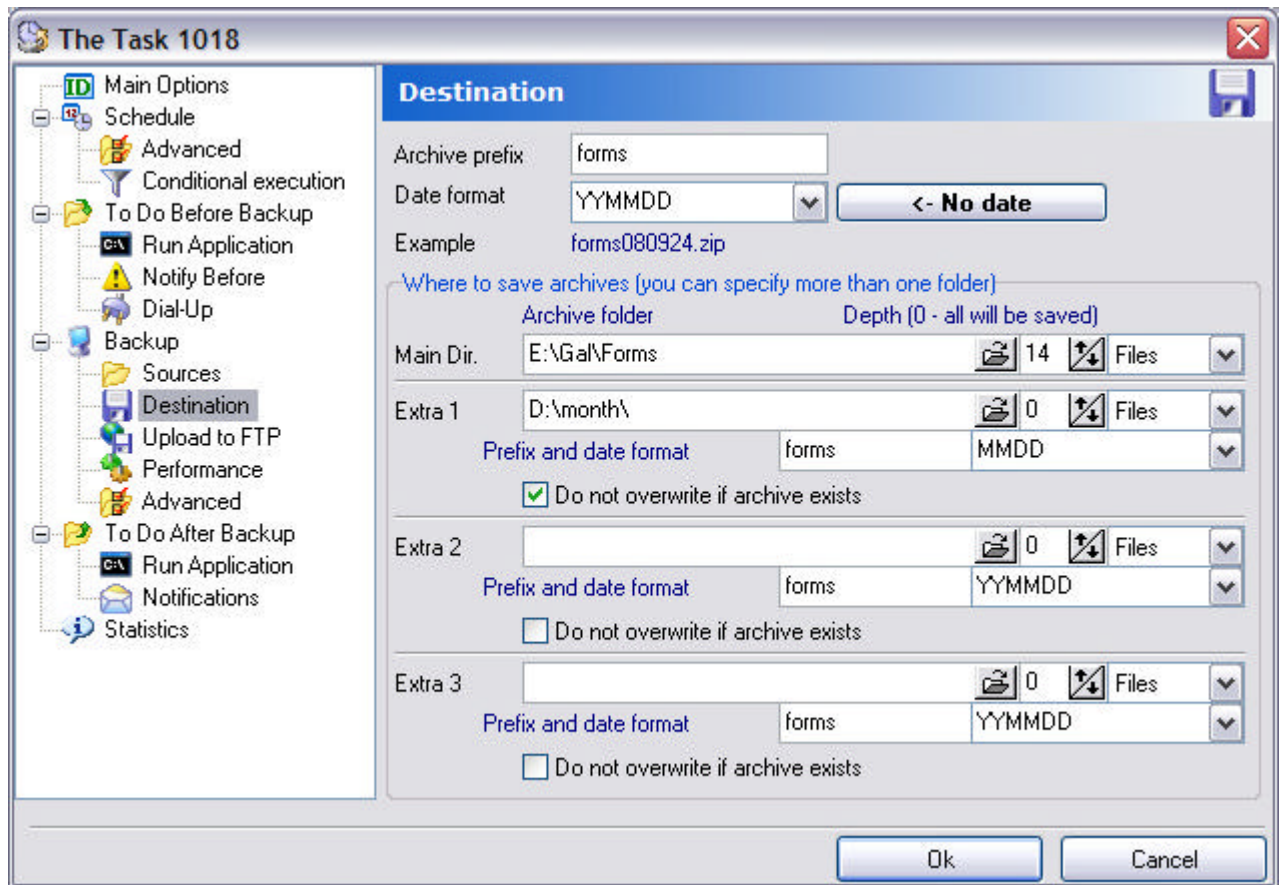
Connection Type

Here you can select FTP/FTPS connection type:

- FTP (not secure)
- FTPS - FTP over implicit SSL/TSL (secure)
- FTPS - FTP over explicit SSL/TSL (secure)



Archive saving



This tab configures parameters of archive saving. The following options are available:

Archive prefix

Archive file (folder) will be named **[Archive prefix][Date format].[extension]**

Date format

You can ask APBackup to add a date to the archive file name. For example, if you set Archive prefix **"Work-"** Date format **"YYYYMMDD"**, then the archive created at 10.12.2003 will be named **"Work-20031210.zip"**.

You can also use **"\"** in the date format. For example, if the date format was **"YYYY\MM\DD\hh-nn"**, then archive created at 02.01.2003 12:34 would have the full path **"2003\01\02\12-34.zip"**. This way you can sort archives to different folders depending on the creation date.

Following macros in date format are available:

- **c** Displays the date using the short format.
- **d** Displays the day as a number without a leading zero (1-31).
- **dd** Displays the day as a number with a leading zero (01-31).
- **ddd** Displays the day as an abbreviation (Sun-Sat)

- **dddd** Displays the day as a full name (Sunday-Saturday)
- **m** Displays the month as a number without a leading zero (1-12).
- **mm** Displays the month as a number with a leading zero (01-12).
- **mmm** Displays the month as an abbreviation (Jan-Dec)
- **mmmm** Displays the month as a full name (January-December)
- **yy** Displays the year as a two-digit number (00-99).
- **yyyy** Displays the year as a four-digit number (0000-9999).
- **h** Displays the hour without a leading zero (0-23).
- **hh** Displays the hour with a leading zero (00-23).
- **n** Displays the minute without a leading zero (0-59).
- **nn** Displays the minute with a leading zero (00-59).
- **s** Displays the second without a leading zero (0-59).
- **ss** Displays the second with a leading zero (00-59).
- **%dw** Displays day of week as number
- **%dy** Displays day of year as number (1-366)
- **%wy** Displays week number of a year

Archive folder

A folder where created archive files will be saved

Depth

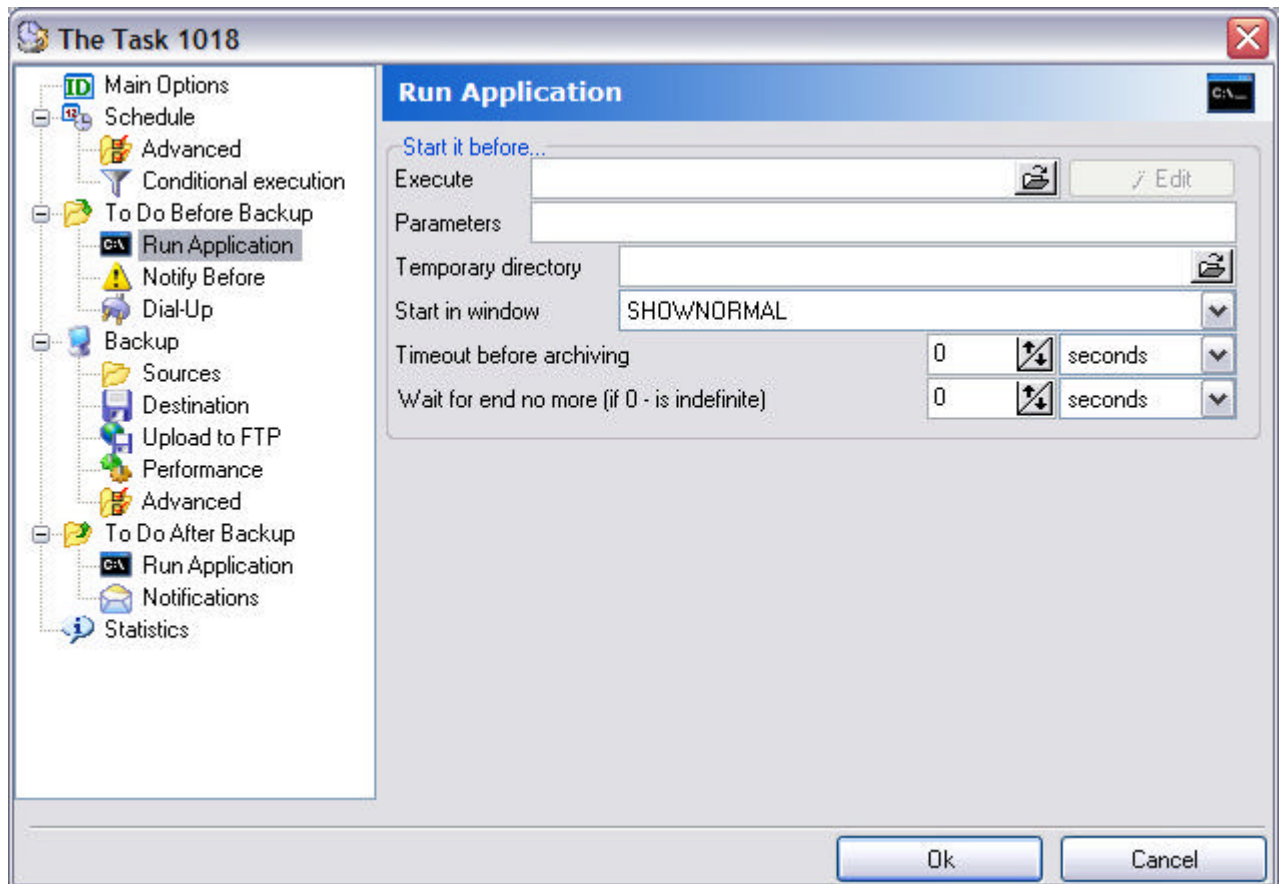
If you set this value to 0, all archive files you ever create will be kept in the archive folder. In another case, only N most recent files will be kept in the archive folder and all older archives will be deleted.

Extra folders

It is possible to save archive files in 3 different folders. For every such folder you can set different Depth, Archive prefix and Date format.

Executing external applications

On tabs «Run before» and «Run after» you can define external applications to run before and after archiving.



On these tabs you can specify the command line, parameters and working directory for external application. You can also define timeout interval in milliseconds. In this case, APBackUp will wait until either the execution is finished or the timeout interval is elapsed. You can set timeout to 0, if you don't want APBackUp to wait for the external application to complete.

You can set timeout after executing external application before starting archive task or after archiving before starting external application. For example, you can send a message to all users asking them to exit the application that locked source files and then wait 5 minutes before starting backup to allow users to exit the application.

Also, on panel "Run before" you can configure dialup connection

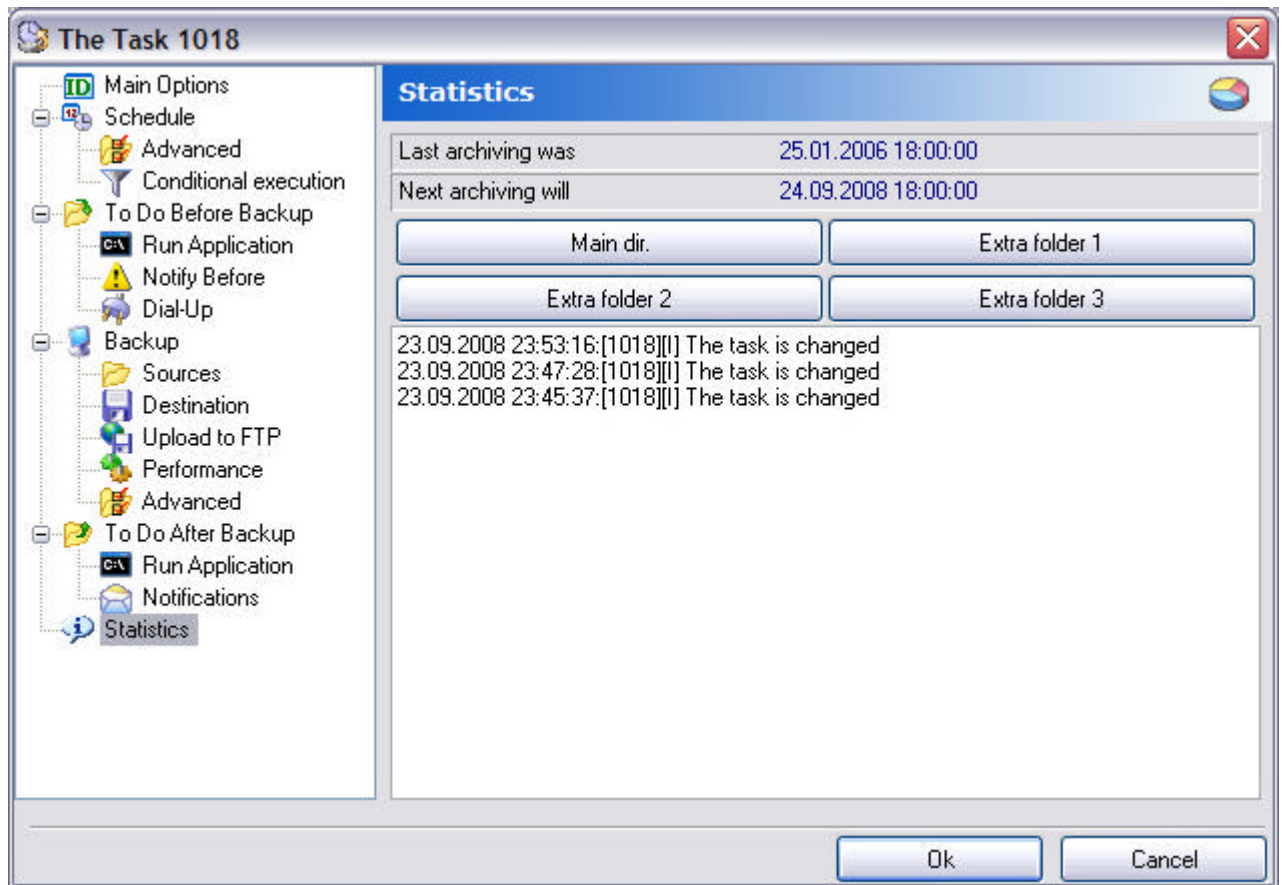
The following macros are available to be used as parameters:

- [ZipName] - archive file name
- [Source] - source folders.
- [TmpPath] - temporary folder
- [Num] - task number

- [Description] - task description
- [Prefix] - archive prefix

Example: If you enter the command "WinZip [ZipName]" in "Run After", then, after archiving is finished, the created archive will be opened in WinZip.

Statistics



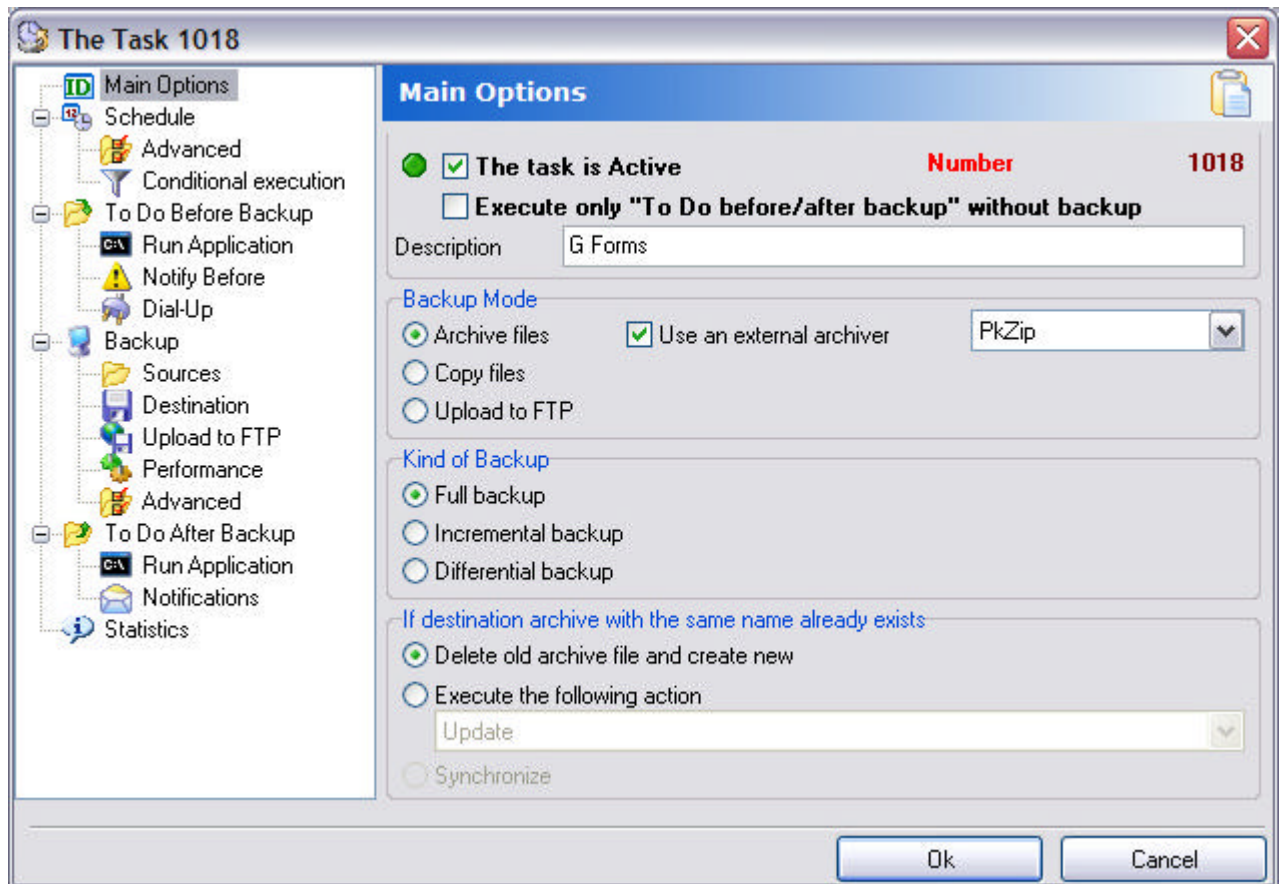
This tab shows the date of last backup and the date, when the next backup will take place. You can also see the log for this task.

Open folder

You can open main and additional folders, where archive created by this task is saved.

External archivers

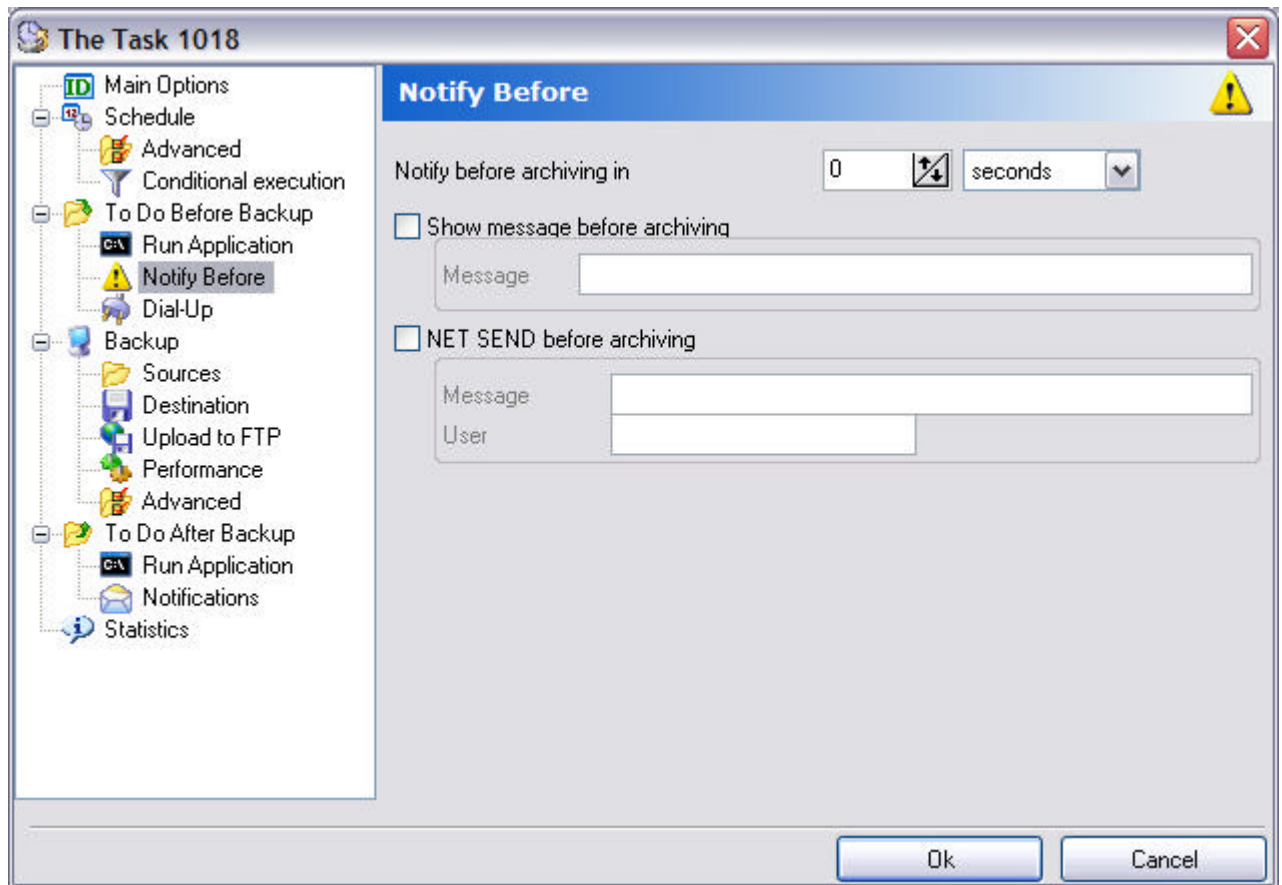
On this tab you can configure the task to use an external archiver.



If you want to pack source files with an external archiver, check "Use an external archiver" option and select an external archiver configuration from the list box. In this list box APBackup shows all the configuration files found in the application's home directory.

If ["Use an external archiver"](#) flag is not set, APBackup will use built-in Zip (Zip64 compatible) archiver.

Notification before the tasks execution



For each task you can define displaying message before execution. For example use this option if you want caution users 10 minutes before backup will be started.

Following ways are available:

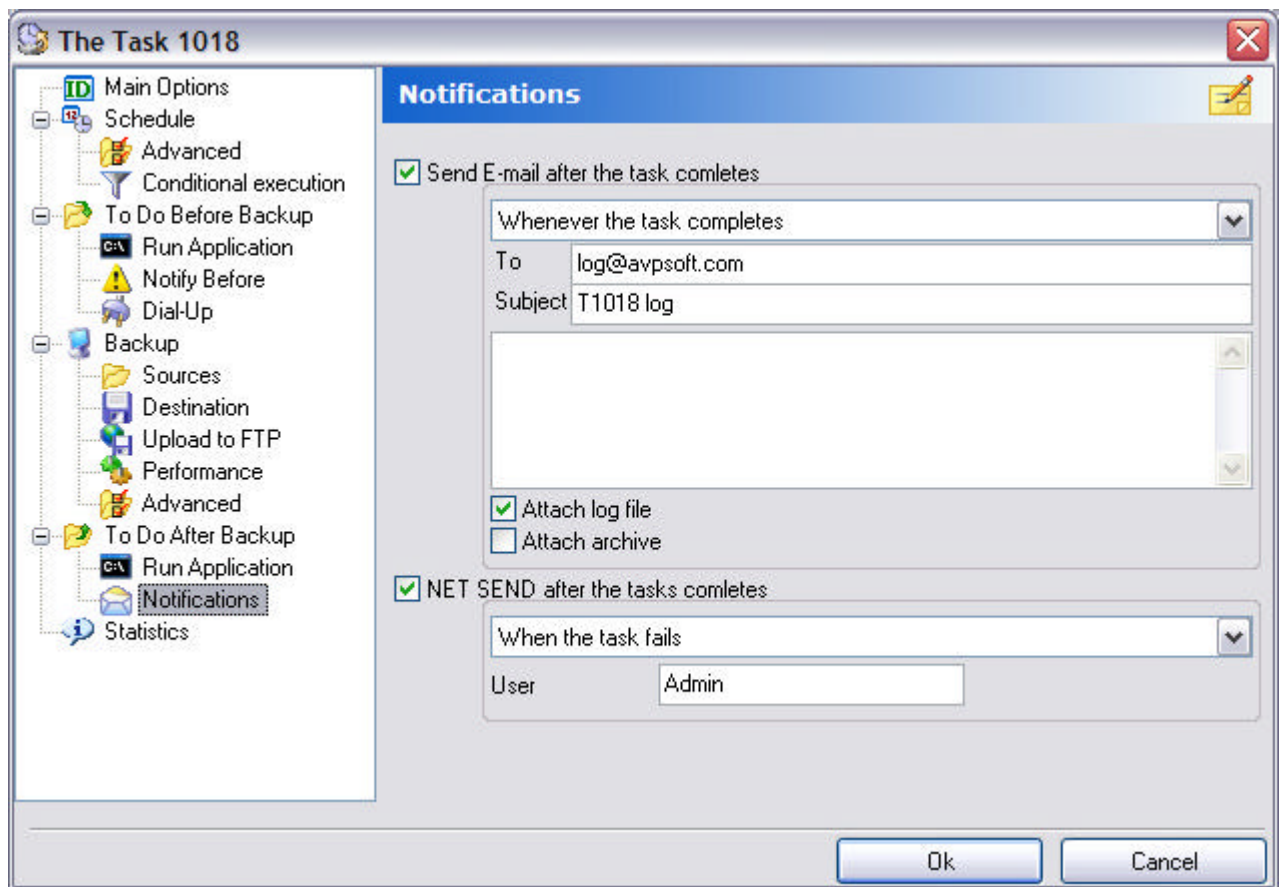
Show message before archiving

In this case APBackup displays window only on computer when it starts.

NET SEND before archiving

In this case you can send message to all Windows domain users through Windows NET SEND service. Enter "NET SEND /?" in command line for details.

Notifications



You can send a notification to backup administrator after execution of a task is completed.

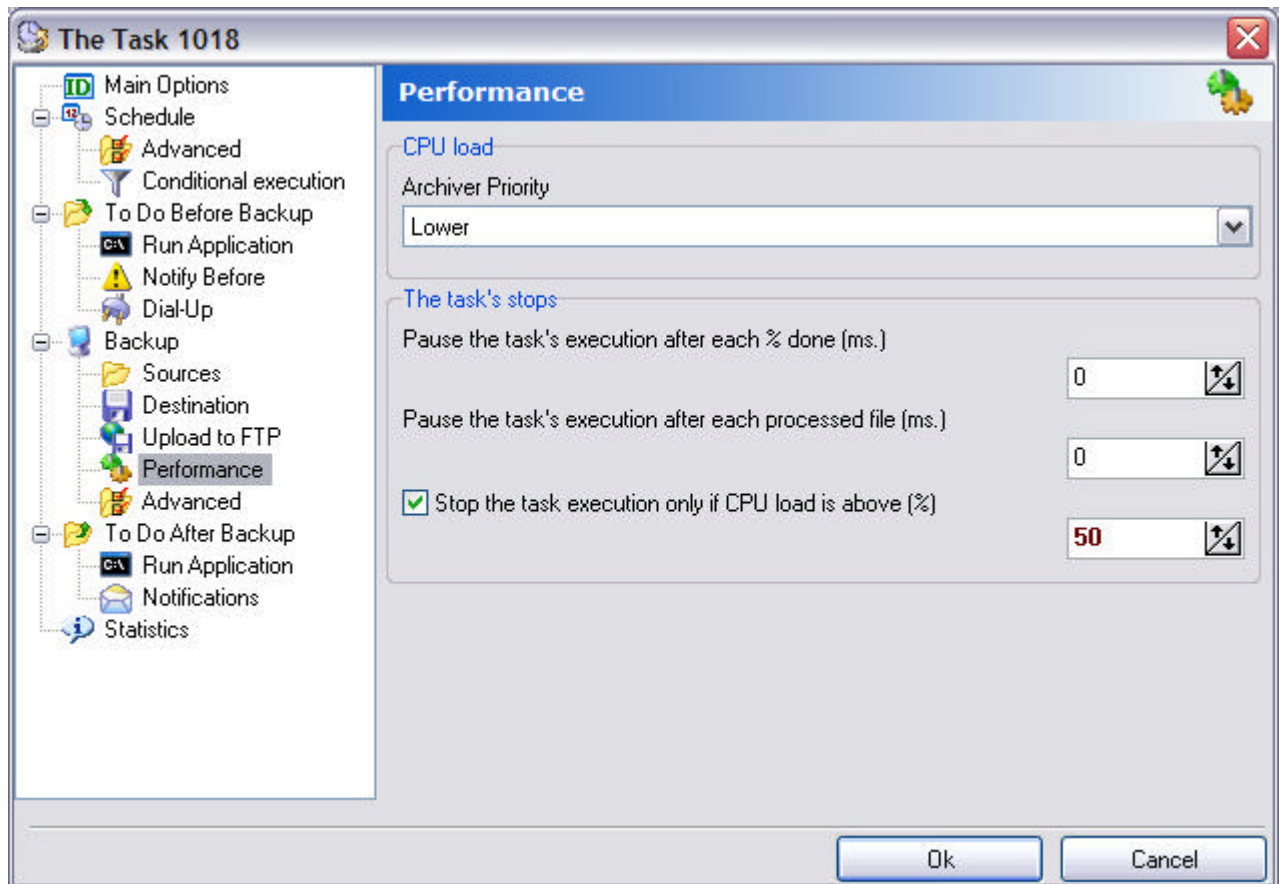
The application can send notifications by e-mail or using NET SEND. You can define different kinds of notifications:

- When the task succeeds
- When the task fails
- Whenever the task completes

To be able to send notifications by e-mail, please configure [SMTP settings in Program options](#).

Performance

On this tab you can tell the application to optimize or minimize the usage of the system resources when task is being executed.



Archiver priority

All tasks execute on different threads. Here you can define priority of this task thread.

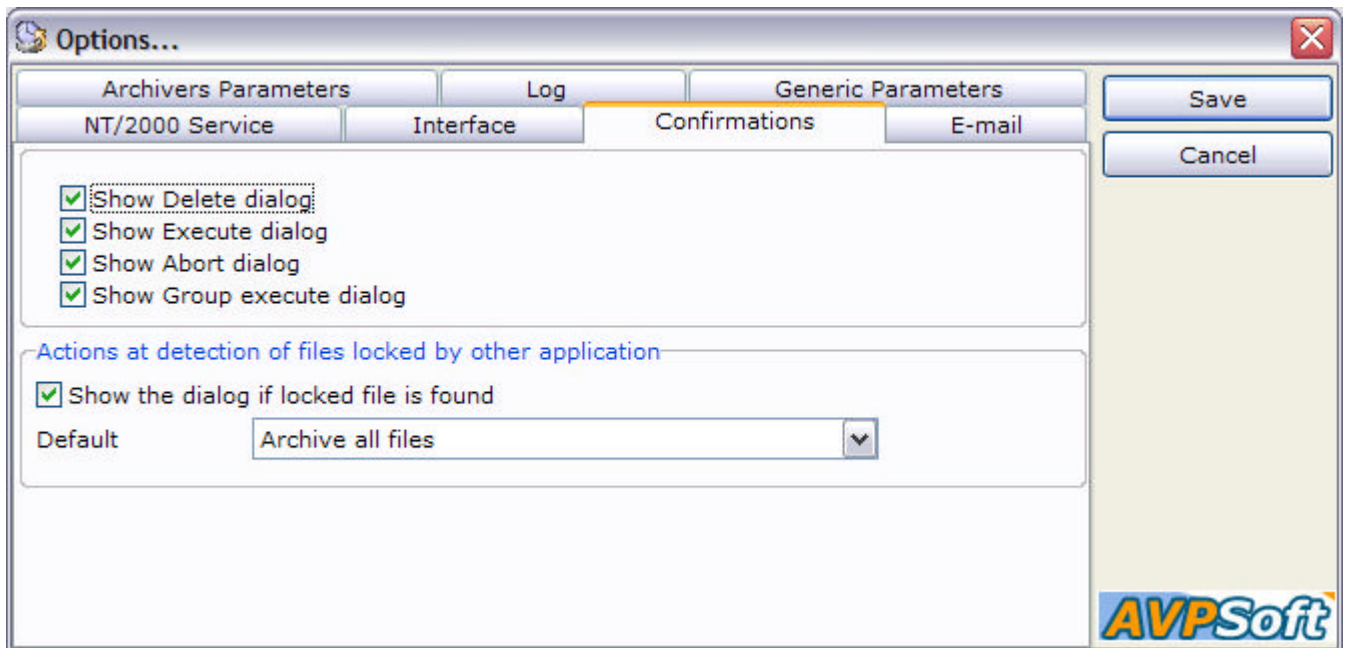
The task stops

You can ask application to suspend task after every archived file or after every percent of execution for the specified number of milliseconds. Alternatively, you can stop the task execution only if CPU load is above X%. This allows you to execute the task with minimal load of the system.

Program options

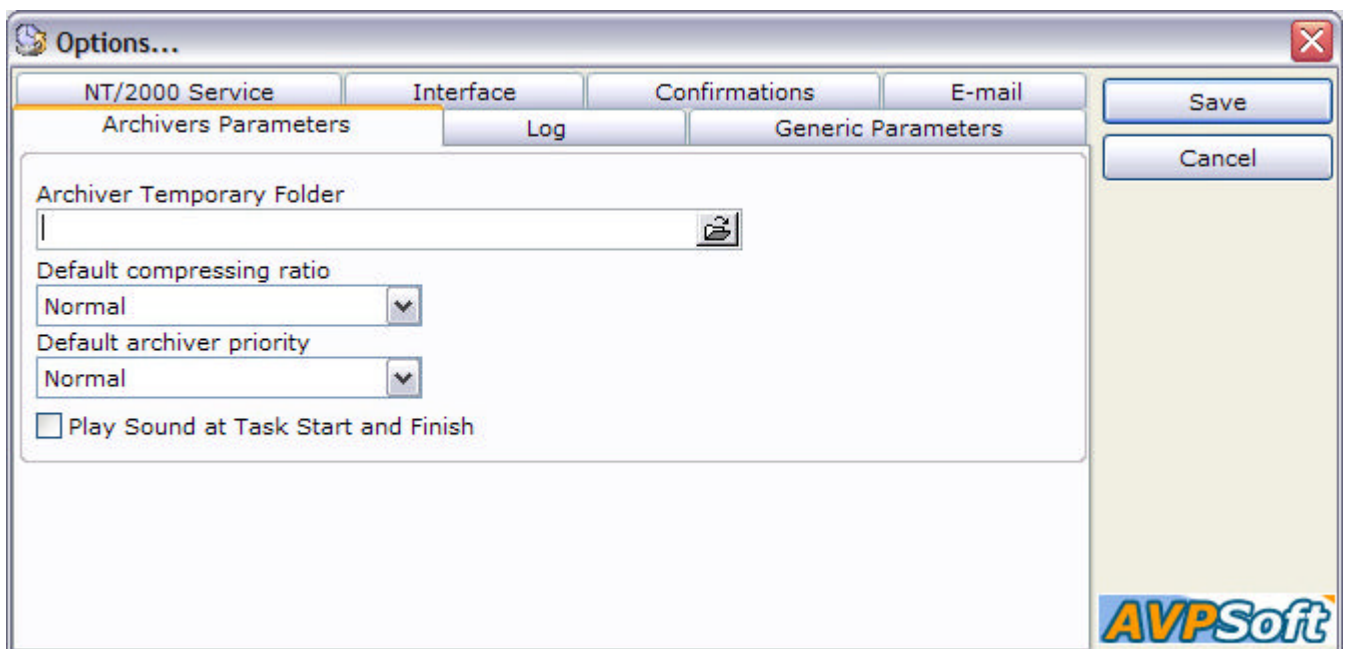
This dialog enables you to configure generic program options.

Confirmations



On this tab you can disable some confirmation dialogs and define default reaction for archiving shared files.

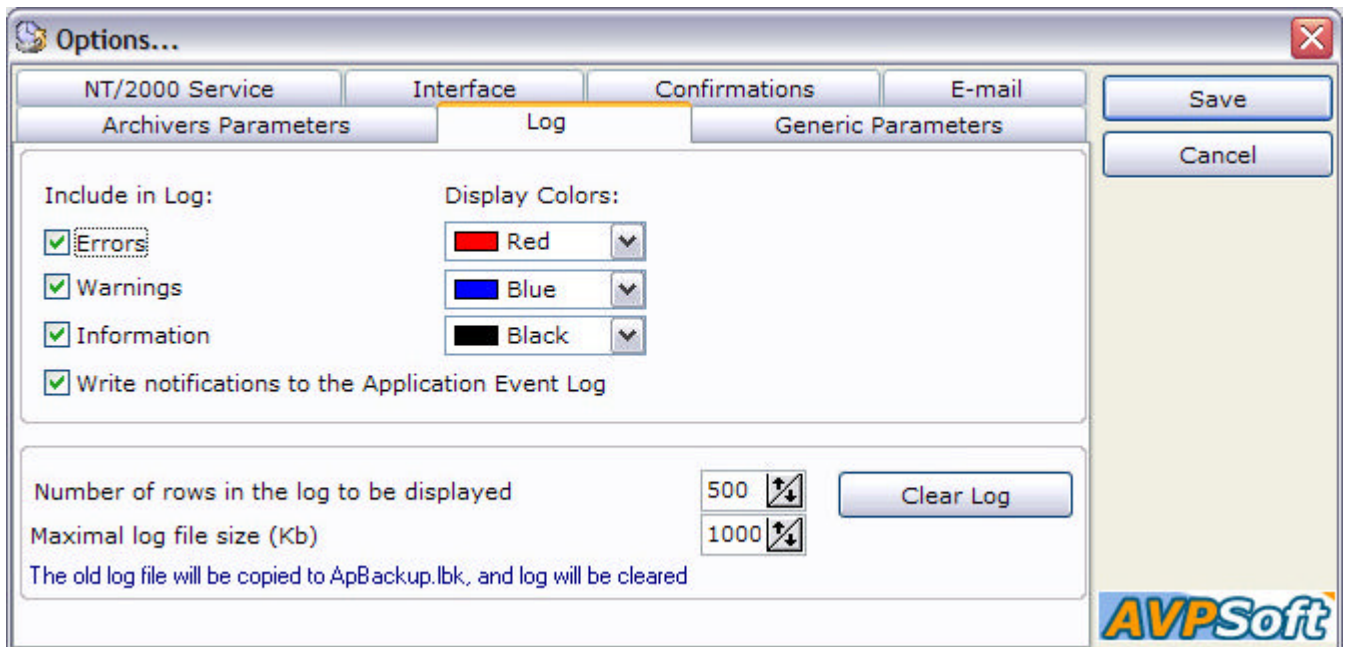
Archivers parameters



Here you can set some common parameters for archiving process:

- Archiver temporary folder
- Default compression ratio
- Default archiver thread priority
- Play sound at task start and finish

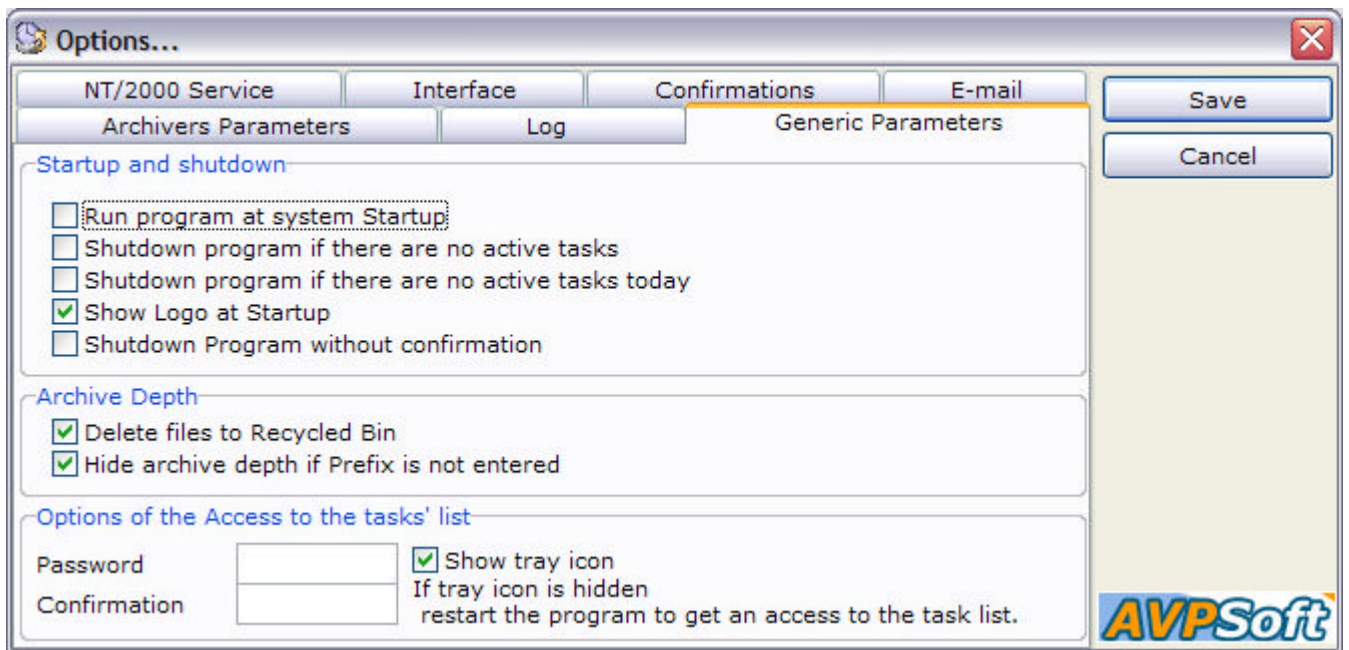
Log parameters



On this tab you can configure log file parameters:

- Include in log. Enable messages you want to see in log file.
- Display colors. You can define different colors for Error, Warning and Information messages in the log window.
- Number of rows in the log to be displayed. Limits number of rows to be shown in the log window.
- Max log file size (Kb). When the log file grows up above N KB, it will be renamed into ApBackup.lbk and new log file will be created.
- Clear log. Press this button, if you want to clear log file.

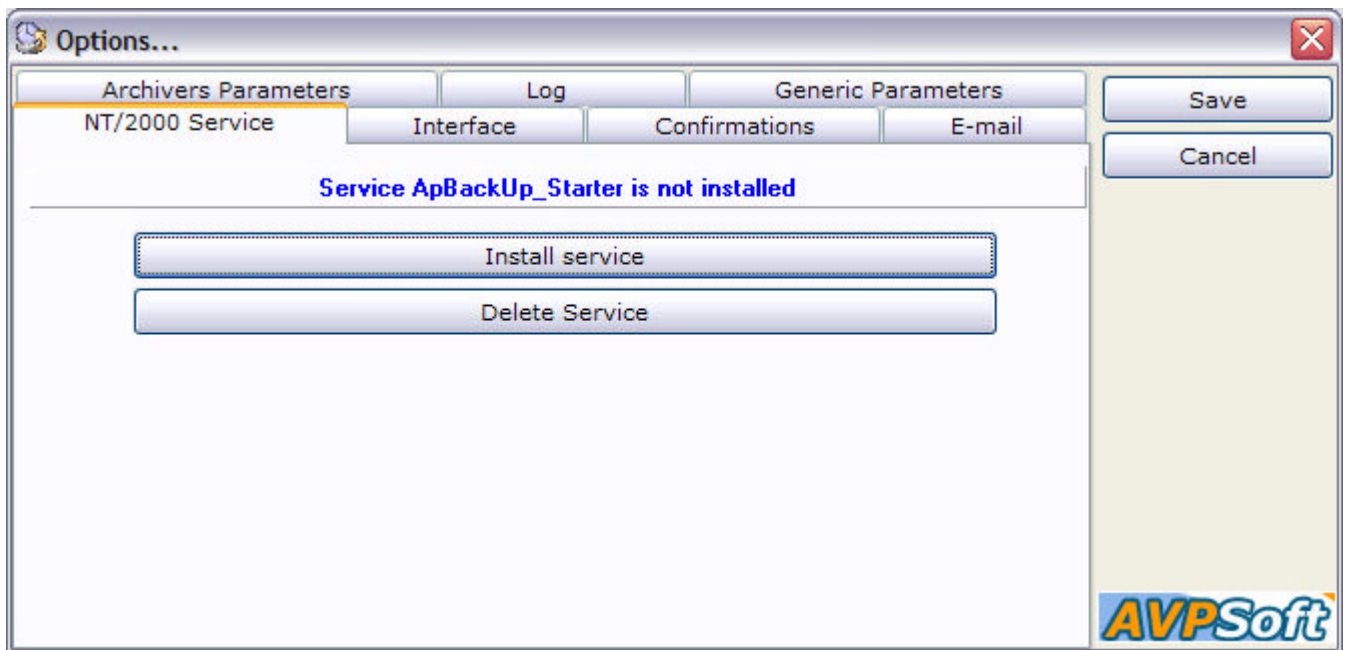
Generic parameters



On this tab you can set the following parameters:

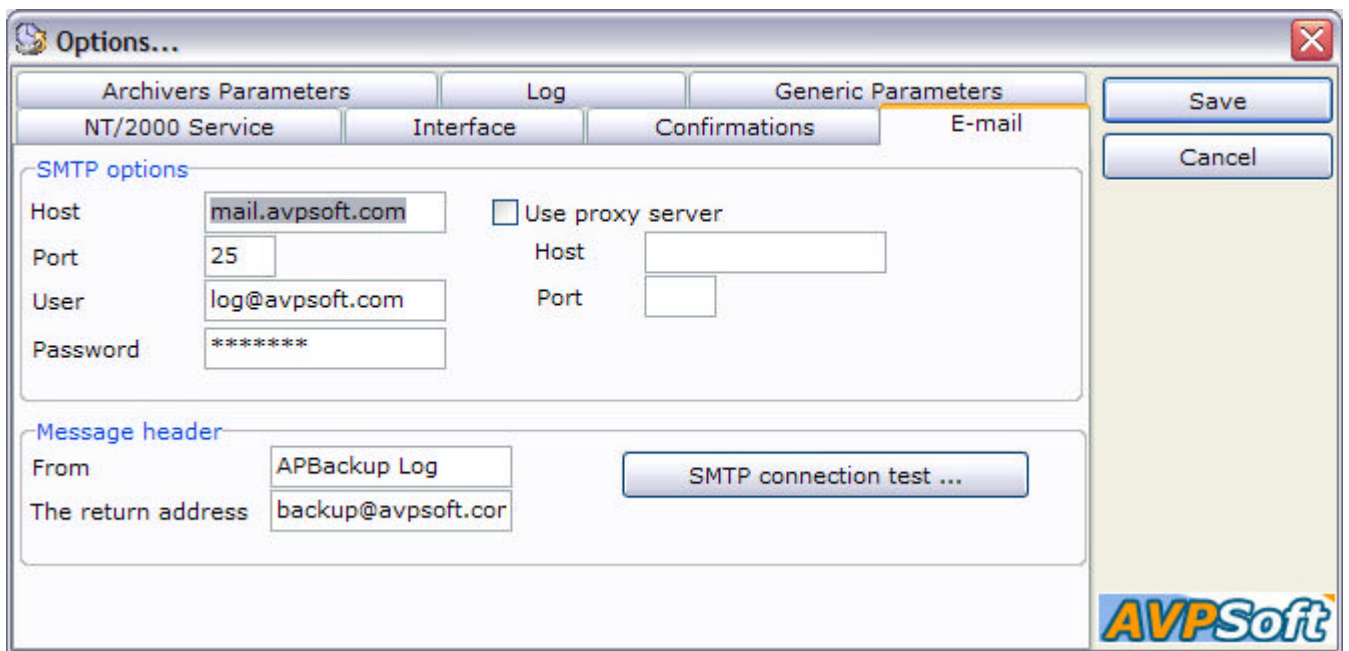
- Run program at system startup
- Shutdown program if there are no active tasks.
- Shutdown program if there are no active tasks today. This option allows you, for example, to shutdown APBackUp after all today tasks were executed.
- Show logo at startup.
- Delete files to Recycled bin. If this option is active, all old archive file will be deleted to Recycled Bin, so you can restore it, if you made a mistake in the task configuration. Normally, you should turn this parameter off once configuration is tested.
- Hide archive depth if prefix is not entered. This option denies entering Depth if you did not enter Archive prefix. If you enter depth, program will delete all files in Archive folders [prefix]*.zip older than Depth, but if you did not enter prefix all files *.zip will be deleted. This option prevents this situation.
- Password to access the tasks' list. You can enter password to access the tasks configuration.
- Show tray icon. If this flag is not set, then application will hide its icon in the tray window. If the tray icon is hidden, simply restart the program to see the task list.

NT/2000/XP/Vista service

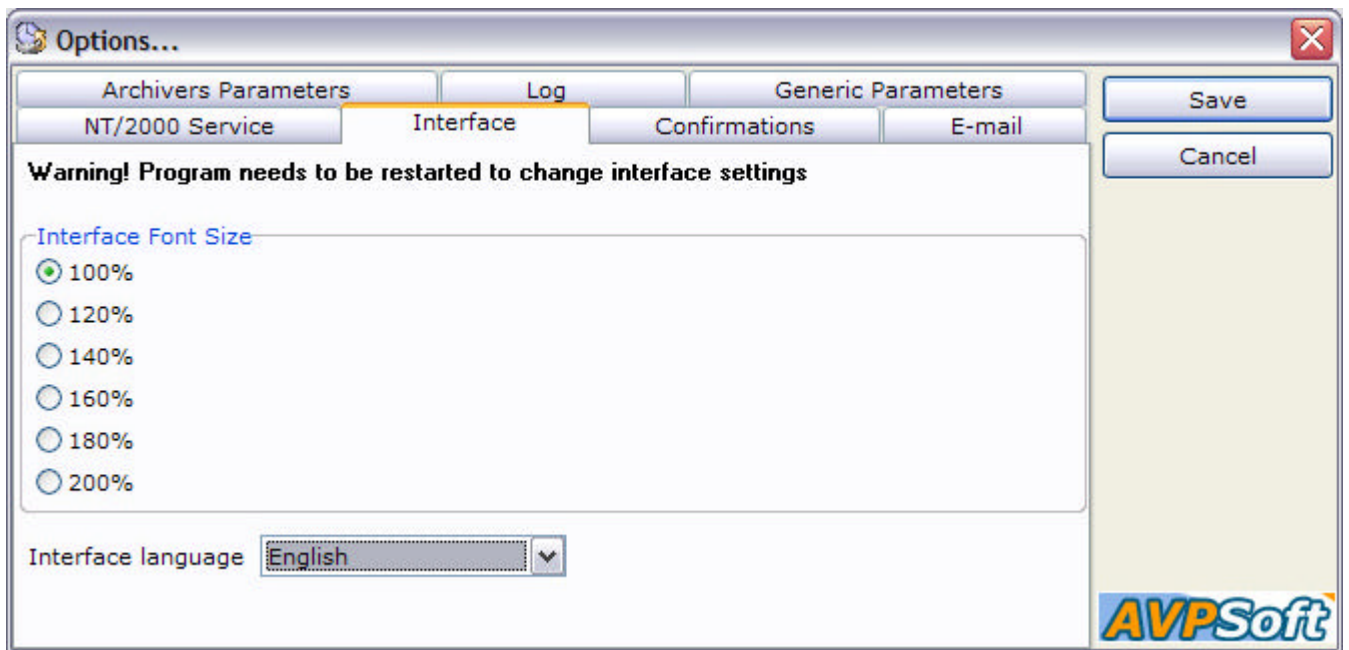


On this tab you can configure running program as NT/2000 service

E-mail



On this tab you can configure SMTP server parameters for Notifications.



Interface

On this tab you can choose interface language. APBackup needs to be restarted to change interface settings.

Using external archivers

APBackup allows compressing source files with built-in Zip archiver or ANY external archiver. External Archiver Configuration is a file with .EMC extension placed in the APBackup working directory. This is just ordinary Windows INI file, so you can edit it in any text editor. APBackup allows you to edit EMC in special "[External archiver configuration editor](#)". APBackup comes with EMC files for some popular archivers (WinRar, jar, WinZip, arj, ace, ...).

If you want, you can easily create an EMC file for ANY other archiver.

For example, let's examine WinRar.EMC file:

[Options]

Comment="WinRar"

Comment - this is just a comment. This field is not used by APBackup.

Ext=rar

Ext- this is an extension for created archive file

Command="C:\program files\Winrar\winrar.exe"

Command - the command line to start external archiver. Usually, a local path to the executable file. If you use EMC from distributive, enter the path valid for your computer.

**ParamStr="[ArhCommand] [RecurseSw] [CompressLevel] [TmpDirSW]
[AddWithArchiveAttr] [ClearArchiveAttr] [Priority] -ds -ed -y -idp [ExcludeSw]
[SaveNTFSRights] "[ArchiveName]" [IncludeSW] [DeleteOriginalFile] "**

ParamStr - this line will be added as a parameter to the command line. All substrings with [] will be replaced with certain parameters for the tasks described below. You can use any switches not used in the task (f.e. "-ds"). Please note quotes (") in "[ArchiveName]" parameter: they are necessary to support long file names.

ReplaceCommand="a"

ReplaceCommand- Replace command for external archiver.

FreshCommand="f"

FreshCommand- Refresh command for external archiver

UpdateCommand="u"

UpdateCommand- Update command for external archiver

RecurseSw="-r"

RecurseSw - this switch will be included in ParamStr if the task is configured to include subfolders

NoRecurseSw=""

NoRecurseSw - this switch will be included in ParamStr if the task is configured to exclude subfolders

ExcludeSw=""-x@[ExcludeFilesList]""

ExcludeSw - switch for excluding files from archiving.

[ExcludeFilesList] will be replaced with the path to actual file generated by APBackUp, with the list of files to be excluded from archive

IncludeSW=""@[IncludeFilesList]""

IncludeSW - switch for including files for archiving.

[IncludeFilesList] will be replaced with the path to actual file generated by APBackUp, with the list of files to be included in archive

CompressStore="-m0"

CompressFastest="-m1"

CompressFaster="-m2"

CompressFast="-m2"

CompressNormal="-m3"

CompressSlow="-m4"

CompressSlower="-m4"

CompressSlowest="-m5"

Here you define switches to set the compression level. Program will select compression level specified in the task

SetTmpDir=""-w[TmpDir]""

SetTmpDir - Define temporary folder. [TmpDir] will be replaced with Temporary folder from the Program Options window.

AddWithArchiveAttr="-ao"

AddWithArchiveAttr - switch to be added to command line if the task is configured with "use archive attribute"

ClearArchiveAttr="-ac"

ClearArchiveAttr - switch to be added to command line if the task is configured with "clear archive attribute"

PriorityIdle="-ri1:0"

PriorityLowest="-ri7:0"

PriorityLower="-ri9:0"

PriorityNormal=-ri0:0

PriorityHiger="-ri11:0"

PriorityHigest="-ri14:0"

Here you define switches to determine archiver thread priority. Many external archivers do not use this option.

DeleteOriginalFile="-df"

DeleteOriginalFile - switch to be added to command line if the task is configured with "delete source files"

SaveNTFSRights="-os -ow"

SaveNTFSRights - switch to be added to command line if the task is configured with "Store NTFS rights"

External archivers configuration.

External Archiver Configuration is a file with .EMC extension placed in the APBackup working directory. This is just ordinary Windows INI file, so you can edit it in any text editor. APBackup allows you to edit EMC in special "External archiver configuration editor". APBackup comes with EMC files for some popular archivers (WinRar, jar, WinZip, arj, ace, ...).

Select menu item **"Edit configurations of external archivers"** to edit the external archivers configurations.

Configuration file is not open

Generic Parameters Command Line 	
---	--

How to register

Read the [LICENSE AGREEMENT](#) first.

Registration benefits:

- Fully functional, unrestricted copy of the software.
- You can use the software after the trial period.
- Priority and FREE technical support via e-mail

Product Cost:

Visit our registration page <http://avpsoft.com/purchase> to learn more about price and volume discounts.

One purchased license gives the right to installing a registered version of APBackup on 1 computer.

Volume discounts available.

Go to our registration page <http://avpsoft.com/purchase> to register.

Registration

APBackup is delivered electronically. You can pay by Credit Card, FAX Ordering, Postal Mail, Phone, and Purchase Order. All major credit cards are accepted.

If you have any questions and proposals about registration - send it to sales@avpsoft.com.

Contact Us



Visit our forum to submit your questions: <http://avpsoft.com/forum>

Feel free to contact us. All registered users of APBackup can get full e-mail technical support. You can also clear out all questions about APBackup registering and write your propositions and thoughts. If you have some interesting thoughts concerning the future development of APBackup, you are very welcome.

Technical support – support@avpsoft.com

Purchasing questions – sales@avpsoft.com

Our partner program – <http://avpsoft.com/partners>

Visit our site for latest news, new versions and updates, and to subscribe to our newsletters <http://avpsoft.com>

License

APBackup – Home & Office backup tool.

Author: Alexei Popov (AVPSOFT)

Visit our site: <http://avpsoft.com> to download last version of APBackup

Technical support: support@avpsoft.com

License for use and distribution

The APBackup utility is distributed as try-before-you-buy. This means:

All copyrights to APBackup are exclusively owned by the author - Alexei Popov.

Anyone may use this software during a test period of 30 days. Following this test period of 30 days or less, if you wish to continue to use APBackup, you MUST register.

Once registered, the user is granted a non-exclusive license to use APBackup on one computer (i.e. a single CPU), for any legal purpose, at a time. The registered APBackup software may not be rented or leased, but may be permanently transferred, if the person receiving it agrees to terms of this license. If the software is an update, the transfer must include the update and all previous versions.

The APBackup unregistered trial version, may be freely distributed, with exceptions noted below, provided the distribution package is not modified. No person or company may charge a fee for the distribution of APBackup without written permission from the copyright holder. The APBackup unregistered trial version may not be bundled or distributed with any other package without written permission of the copyright holder.

You can learn about registration on the website <http://avpsoft.com>

APBackup UTILITY IS DISTRIBUTED "AS IS". NO WARRANTY OF ANY KIND IS EXPRESSED OR IMPLIED. YOU USE AT YOUR OWN RISK. THE AUTHOR WILL NOT BE LIABLE FOR DATA LOSS, DAMAGES, LOSS OF PROFITS OR ANY OTHER KIND OF LOSS WHILE USING OR MISUSING THIS SOFTWARE.

You may not use, copy, emulate, clone, rent, lease, sell, modify, decompile, disassemble, otherwise reverse engineer, or transfer the licensed program, or any subset of the licensed program, except as provided for in this agreement. Any such unauthorized use shall result in immediate and automatic termination of this license and may result in criminal and/or civil prosecution. All rights not expressly granted here are reserved by Alexei Popov.

Installing and using APBackup signifies acceptance of these terms and conditions of the license.

If you do not agree with the terms of this license you must remove APBackup files from your storage devices and cease to use the product.

Thank you for using APBackup
Alexei Popov